

# First United Methodist Church Messenger

drawing near to the heart of Christ

Newsletter - November 2011

**“O give thanks to the, Lord, for his steadfast love endures forever.” - Ps 136.1**

Below you will see a note from Debbie Woods, our congregation’s financial secretary. Debbie has served faithfully for six years, helping us grow in our stewardship and ministry. She leaves us on good financial footing to fulfill some family obligations. We will miss her as part of the staff. Her wit and laughter have been a great part of the office life at FUMC Gulfport. We send her with blessings and good wishes.

As Debbie leaves, Staff-Parish Relations Committee has been working to find someone to help us grow into the future. We are happy to announce that Mary Beth Lanassa will join our staff in November in the role of financial secretary. Mary Beth was born in New Orleans and has lived in many places across the US. In 2002, she returned to the MS Coast where here family has deep roots. For the last eight years Mary Beth has served as Administrative Assistant at Gulfport First Presbyterian Church where she is an active member. Before moving the Gulfport, Mary Beth worked with Volunteers of America doing accounting and finances for 25 years.

A person of deep faith who loves the church, Mary Beth is excited to be part of this community of faith as a member of the staff. Her office hours will be from 1:00 p.m. to 4:00 p.m., Monday to Thursday. I hope you will send her an email or stop by to welcome her among us.

While we are talking about staff, I encourage you to send a good word to each of those who serve to lead us in ministry. We have a strong and faithful staff.

Serving with you, under the dome of God’s watchfulness and care,

*From Debbie*

*It is with a very heavy heart that I inform you that I will be leaving FUMC as of November 3. Family obligations are not allowing me to work a normal schedule and it is best that someone else step into the role of Financial Secretary. My six years as your Financial Secretary has been a very rewarding journey and one that I will always be grateful for. The decision to leave was a difficult choice to make, but one that I feel is necessary. Thank you for your understanding and support. I will miss you greatly.*

*Sincerely, Debbie Woods*



**Ushers for November:**

Terry Barfield, Albert Carapetian, J.D. Crockett, John Halliday, Pete Lenes, Lem Porter, Nicholas Rice and Don Warren.

**Nursery Workers for**

**November:** 6th, Beth Matthews, Dot Moore; 13th, Christy Moseley, Jan Nelson; 20th, Cindy O’Neill, Betty Peaks; 27th, Vicki Taylor, Julie Wright.

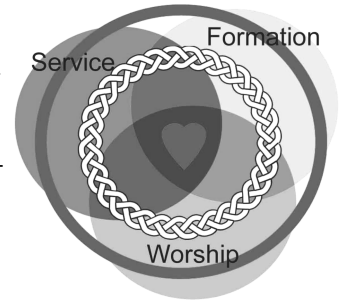
Inside this issue:

Formation & Service by Chris Ray	2
Please Pray for...	2
Community Thanksgiving Worship Service	2
Minister to Families with Children and Youth by Ryan George	3
Arts under the Dome	3
Sassy Seniors	4
Friends of Martha	4

# Worship - Formation - Service

*under the Dome of God's watchfulness & care*

## Formation and Service - *Chris Ray*



### Formation:

As we continue to journey together we say thank you to George East for his service in being the co-shepherd for the past year in formation. George, without your dedication and heart for formation within our church, the foundation upon which we continue to build on would not have been built or as sturdy as it is. With George transitioning out at co-shepherd of formation we welcome in a new co-shepherd. Geneva Dummer is the co-shepherd for 2012.

- ◆ Long-term Disciple Bible study is ongoing.
- ◆ "Love Wins" Book Study is ongoing.
- ◆ We will start an Advent Study November 27 through December 18. This class will be during the Sunday Morning Journey Group time and will be lead by Lost and Found.

### Looking ahead to 2012:

- ◆ Long-term Disciple Bible study will continue, there will also be many more options that will be advertised soon!!!

### Service:

As the service pillar continues to grow and move together, lets say a huge thank you to Susan Lenes for her year of service as co-shepherd with the service pillar. As she transitions out, we welcome in a new co-shepherd for 2012, Roger Brunell.

WI Smith Fund needs your donations. We were able to help those who needed assistance for three weeks and then had to stop with the assistance, we were overwhelmed with the need and the amount of funds just could not hold up past those weeks. If you would like to donate to the WI Smith fund, please write your check to the church and mark it WI Smith.

Feed My Sheep: We now have a sign up sheet in the office for all the 2012 dates that we will provide a sack lunch at Feed My Sheep. We provide them every 3<sup>rd</sup> Sunday of every month. If you are interested in being part of this wonderful ministry please sign up in the church office!

Wade Bishop and I met with a representative of the Red Cross to talk about our church being an emergency cold weather shelter again this winter. This process is ongoing and will continue to update everyone as we continue this journey.

Thank you to all who were involved, in leading or attending the conference on homelessness. We continue to journey down the road of being a two-day week day shelter.

If you have any questions please contact Chris Ray, [chris@fumc-gulfport.org](mailto:chris@fumc-gulfport.org), or call the church office 863-0047.

### Please Pray for....



...Tyler Schultz, grandson of Gene and Betty Schultz, who is in the U.S. Air Force.  
...Brister Bishop, son of Wade and Ruth Bishop, who is in the U.S. Navy.



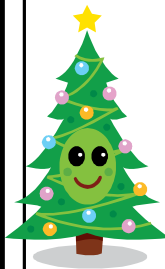
### Thanksgiving Meal Donation Bags

Thanksgiving Meal Donation bags are available at the church doors with the contents list. Consider sharing this holiday thanks with some folks in our community. Please return donated items by Sunday November 20, to be delivered to Gulf Coast Community Ministry the same day.

### Community Thanksgiving Service



Join us for a  
Community  
Thanksgiving  
Worship Service at  
Mississippi City UMC  
Sunday, November 20  
at 5:00 p.m.



The "*Gift Tree*" for children's holiday presents is being coordinated with the Women's Center for Non-violence again this year. The Gift Tree, previously called the Angel Tree, will be in the Fellowship Hall later in November. Several people can go together for one child's presents. Our members were very generous last year and the agency was very pleased about our support. God bless us to be His blessing to others.

## *drawing near to the heart of Christ*

### **Minister to Families with Children and Youth**

- Ryan George

The church and the family should partner to accomplish more. That's a core belief I have. The bad news is that the words can point us in all the wrong places. The church's history is chocked full of bad things. The family is on shaky ground and less defined than ever. Partners are something you have in business. It all sounds like a lot of give and take.

And to be transparent, I don't mind the "give" part, but the "take" always seems to come first. The take looks like a lot more activities and events. It sounds like it cost a lot. My calendar and life are already packed full and now I have **less** time to do **more** stuff. That's before we even talk about what I'm getting out of this. That's not clear at all. Will my kids suddenly become uber-Christians? Do I get more sins and a get out of hell free card?

Very little of that is useful. So what if we drop that line of thinking and try going on a trip together? Let's load up and head through adolescence together and see what happens along the way. We'll figure out some pros and cons of each other, strengths and weaknesses, and in the process we will find where we need to give and take to make it the best situation possible. Before we start down the path, we should probably decide where we want to end up: just barely making it through to graduation, landing safely inside college, having them see what family and church can do together so it spreads and grows. There are several choices, we need to pick and start moving cause this trip has already started. If we choose two different ones, the conflict will set the trip up to be painful and tiring.

So let's end where we started. The church is supposed to point to what matters the most. The family is supposed to show love. Working together, combining the influence, we'll do more. Do you want a hand, a fellow journeyer, a trust-fall partner or do you want to do this solo? This means give and take. It means being active and doing your part, making God and family your first priorities, leading a life worth following, and even admitting that you'll need help along the way.



And if you see the church not pointing properly; keep us honest. Because we're partners, we are in this together. Because our kids are too important for us to mess it up.



**ARTS UNDER  
THE DOME  
KICKS OFF  
SEASON  
SATURDAY,  
NOVEMBER 19**

Grammy-nominated "Wild

Woman of the Harp" Deborah Henson-Conant brings her incomparable fusion of music, theater and humor to Arts Under The Dome to kick off our 19<sup>th</sup> season on Saturday, November 19 at 7:00 p.m. (note: the season brochure says Friday, but it's Saturday) With her strap-on 36-string custom built electric harness harp, Henson-Conant is a cross-genre, blues-flamenco-Celtic-funk-folk-jazz dynamo. Her dazzling musical range and depth of technique combined with her irrepressible energy, humor, and warmth takes audiences on a musical ride guaranteed to bring down the house. Deborah hosted her own show, "Invention and Alchemy", on PBS in 2007 and won an Emmy.

Other concerts in the 2011-2012 season are guitarist extraordinaire Edgar Cruz on January 14, legendary cowboy balladeer Don Edwards on February 4, jazz trumpeter Dominick Farinacci with jazz pianist Aaron Diehl on February 18, and world music ensemble Festival of Four on March 4.

Tickets are \$15 adults, \$10 students. Season tickets for five concerts are available for \$45 individuals or \$90 families (in same household). Any tickets may be purchased at the door or online, or you may get them from the church office. For information go to our website, [www.arts.fumc-gulfport.org](http://www.arts.fumc-gulfport.org), or call Joann Edwards at 863-0392.

The Messenger  
2301 15th St., Gulfport, MS 39501

Church: 228-863-0047  
Fax: 228-863-7729  
Email: andy@fumc-gulfport.org  
Hope Morgan Ward – Bishop  
William T. McAlilly – District Superintendent  
Andy Johnson – Pastor

Non-Profit Orgn.  
U.S. Postage  
PAID  
Gulfport, MS  
Permit No. 147

We're on the Web!  
[www.fumc-gulfport.org](http://www.fumc-gulfport.org)

### Gift Given

In loving memory of Juanell Meek  
Given by Sharon and Jack Wiseman

### Our Christian Sympathy...

...to the family of Hazel Goodyear who died Sunday,  
October 30 in Tennessee.



**The Flower Calendar** for 2012 on the  
bulletin board by the church office.  
Please stop by and sign up for your  
special date for Sunday altar flowers.  
Cost: \$40.00.



### Navajo Christmas Shoebox Project

Although our church has not been able to  
send a team to the Navajo Reservation  
since 2008, we would like to remember  
our Many Farms UMC church family in  
Arizona this Christmas. We have asked  
Pastor Shirley John about the ages of the  
children. In mid-November we will be  
placing a box with Christmas gift tags on the table at the  
entrance to the Fellowship Hall. The gift tags will have  
generic information (for example: boy age 8-10, girl age 14-  
16 - this is so that no one will get left out)! You may take a  
gift tag (or tags) and fill a shoebox with age-appropriate gifts.  
We ask that you spend no more than \$30 per child. Please  
wrap the shoeboxes, with the gift tag on the OUTSIDE of the  
box, and return to the church office or to Catherine Barnes. If  
you have any questions you may call Catherine at 229-6851.  
Sonja Sheffield has donated LOTS of shoeboxes, so we will  
have the shoeboxes in the room across from the table. If you  
are unable to shop and would like us to shop for you, you may  
make a check out to FUMC and designate it Navajo Shoebox.  
The Navajo families are really struggling in this economy and  
they will appreciate this gesture of love at this special time of  
the year. **Thank you to our FUMC church family for all  
your past support and for bringing Christ's love to the  
children of Many Farms.**

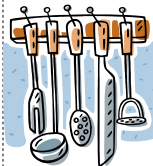
### Sassy Seniors

Sassy Seniors go on the Road to the Tiki  
on Wednesday, November 9th (PLEASE  
NOTE THAT IT IS ON THE 2nd  
WEDNESDAY IN NOVEMBER) AND  
LEAVE THE CHURCH AT **11:45 A.M.** IN THE VAN  
TO ARRIVE BY 1 P.M IN GAUTIER. Will have maps for  
all drivers and it is off Hwy. 90.



### Seniors 2011

Seniors 2011 will be on the third Thursday, November  
17th at 2 p.m. at the Handsboro Community Center with  
Gulfport's Fire Department Chief Michael Beyerstedt  
speaking on "Take Care with Heating and Fires."  
Wayne D. Stephens will sing for the seniors. The program  
is sponsored by Garden Park Medical Center and hosted by  
Ada Reid. The free program invites all seniors and other  
interested people to attend.



**The Friends of Martha** will be back in the  
Kitchen on Saturday, November 5th at 9:00  
a.m. ..just in time for the holidays! Come join  
us for breakfast, fellowship, and some mixing,  
chopping, and cooking of special holiday  
dishes. All proceeds from sales go to various  
mission and outreach projects. Hope to see  
you there!



**Thank you** to those who helped in the  
church office while Gloria was out of  
town: Lou Black, Ginny Cooley, Nora  
Urmeneta and Charlee Gaspa.

### Sisters in Service

Sisters in Service Christian women's group will be  
meeting on November 8th at the Jefferson Davis  
campus to provide the Wesley Club luncheon. Please be  
there by 11:30. For information call Diane Miller, 867-  
1244.